

Self-Healing Healthcare APIs with Intelligent Error Handling in MuleSoft

Author Name: Rakesh konda

Affiliation: Independent Researcher

Role: MuleSoft Developer

Email: konda9406@gmail.com

Abstract: *The Self-healing APIs can ensure automatic detection of issues and recovery from them. The intelligent error handling of MuleSoft can enhance the self-healing capacities of API in the healthcare domain. The present study aims to analyse how the MuleSoft with its intelligent error handling is benefitting the self-healing healthcare APIs. The study is making use of explanatory design. The study is using qualitative and quantitative data for reaching the outcomes. The findings reveal how MuleSoft can benefit APIs to recover from errors with their rigorous performance monitoring. The companies should map the data and ensure the security needed for MuleSoft integration across APIs in healthcare.*

Keywords: *healthcare APIs, self-reliant APIs, API errors, MuleSoft error handling, MuleSoft implementations.*

I. INTRODUCTION

A. Background of the study

The Self-Healing APIs in healthcare are facilitating the automatic detection of issues and their corrections within the system. Automatic detection and correction ensure continuous operations and is of high importance in healthcare. The fault tolerance is enhanced with the self-healing steps in API. An intelligent self-healing framework is able to quickly adapt to any kind of changes within the application [1]. The MuleSoft is a platform that integrates systems, data and applications. The MuleSoft is effective in managing any errors with customised strategies and built-in handlers. The disruptions are managed with the application.

B. Overview

The healthcare industry requires to be resilient for navigation across unpredictable events and maintaining service delivery. Maintaining high availability and resilience is of top priority in the current healthcare systems. MuleSoft is offering a distinctive advantage enabling the integrations to rapidly recover from system errors. The self-healing microservices are being increasingly used today for developing robust systems that can automatically recover from any failure [2]. The use of MuleSoft in intelligent error handling for healthcare can ensure critical benefits. The present era of interconnected services has led to APIs becoming the backbone of healthcare [3]. However, the APIs face significant risks such as service outages, data corruption and network timeouts. Effective error handling with the use of impactful applications is essential for obtaining results. The healthcare industry can especially benefit from APIs with intelligent error-handling platforms such as MuleSoft.

C. Problem Statement

The APIs are being increasingly used across healthcare for the proficient handling of clinical data. The APIs encode clinical terms and extracting clinical concepts. However, API errors such as network outages and service disruptions may affect the resilience of healthcare systems [4]. The error handling to ensure self-healing and resilience of operations is not present. A more intelligent error handling and recovery can aid in the development of resilient systems.

D. Objectives

The present study is having the following objectives: 1) To identify the issues of API error handling across healthcare 2) To

analyse the crucial advantages offered by self-healing APIs in healthcare using intelligent error handling with MuleSoft 3) To comprehend the steps that will enable the MuleSoft driven API implementation in healthcare.

E. Scope and Significance

The scope of the study is to identify the issues associated with API error handling in healthcare. The study will analyse the crucial advantages being offered by the self-healing API applications across healthcare leveraging the intelligent error handling of MuleSoft. The examining of the steps that can ensure comprehensive implementation of MuleSoft-driven API is the scope. The study is having critical significance as the knowledge will aid in developing robust models that can quickly recover from errors. The increasing complexities in the healthcare system establish the need for resilient systems [4]. There is an urgent need for self-healing APIs that will ascertain smooth operations.

II. LITERATURE REVIEW

A. Issues of using API impacting healthcare outcomes

The APIs are having significant benefits across the healthcare domain initiating rapid adoption. The APIs are helping healthcare organisations to coordinate care for patients in an innovative manner [5]. However, there are inherent security risks associated with the use of API. The API is vulnerable to cyber attacks amounting to \$ 41 billion [5]. The figures are a testament to the huge degrees of threats that can disrupt the system. The API errors is occurring with the server failing to locate the relevant resource from the API provider. The efficient handling of errors will facilitate smooth operations within healthcare organisations.

There are a set of errors experienced by API that needs to be managed. There are numerous internal server errors and bugs

encountered [6]. The triggering of such errors can lead to outages in the healthcare system. Dynamic accessibility and interoperability are ensured with the effective management of errors. Effective error handling through self-healing APIs will enable the construction of robust models.

B. Advantages of self-healing APIs within healthcare using intelligent error handling

API-led connectivity is of high importance within the healthcare systems. The API-led connectivity enables the integration flows that can be reused across integration platforms. The MuleSoft making use of Any Point exchange is aiding in the effective deployment of API across healthcare. MuleSoft is having a salient role to play in terms of building a scalable platform in healthcare [7].

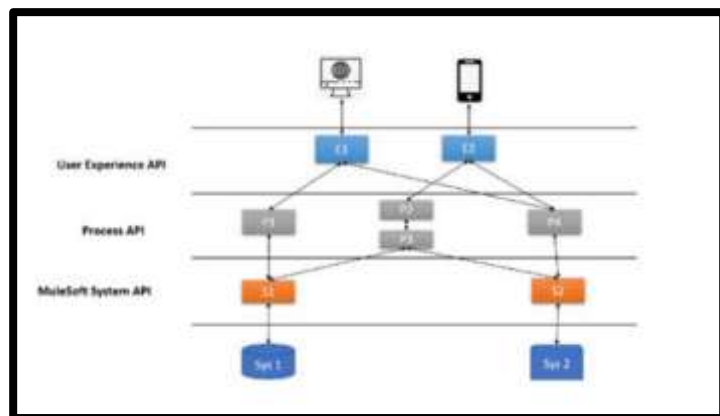


Figure 1: The MuleSoft API system

(Source: [7])

The MuleSoft is unlocking the various functionalities that are enabling unified integration [7]. MuleSoft integrated within API can offer critical advantages to the healthcare system [7]. The MuleSoft integrated API structure can be noted above [*Refer to Figure 1*].

MuleSoft is having in-built security that can aid in the error handling. The well-defined access controls, encrypting and auditing of log capabilities aid in developing robust capabilities [7]. The MuleSoft is having

certain key capabilities that is fortifying the API integrations. Performance monitoring and data transformation is helping to identify errors beforehand [8]. The self-healing capabilities of API can be enhanced with the integration of MuleSoft. There is consistent error handling possible making use of MuleSoft. The MuleSoft as a middleware tool is providing advantages in terms of pre-built connectors [9]. The use of MuleSoft makes it easier for organisations for connecting standard patterns and helping in accomplishing seamless integration. The MuleSoft used in API can lead to better solutions with its impact-driven error handling components.

C. Impacts of intelligent error handlings in healthcare

Intelligent error handling in APIs is of top priority within healthcare. There is high fault tolerance ensuring that critical systems continue to operate even in case of any disruptions faced. The healthcare with the fault-tolerant decisions is able to develop robust models. The fault-tolerant decision-making schemes are of top importance within healthcare [10]. Fault tolerance and resilient systems are of top priority in healthcare. The ensuring of system uptime and data integrity is crucial in maintaining timely care. Fault tolerance is of high importance since it assures that systems will continue functioning even in the case of individual components failing.

Intelligent error handling is enhancing the fault tolerance capabilities in healthcare. Error handling is the way API platforms handle or presents errors during their consumption [11]. The intelligent error handling with self-healing capabilities will enable the applications to function smoothly. The healthcare will be able to dispense the necessary care in an accurate and timely manner for the patients. The self-healing coding with clever automations can increase the resilience of healthcare with the seamless recoveries possible.

D. Steps for successful integration of self-healing API

The healthcare looking to implement API will need to follow crucial steps. There is data mapping needed for the integration of MuleSoft in the APIs of healthcare. The data should be mapped correctly between the different formats. The characterisation of large datasets is possible with effective data mapping [12]. There are robust security measures needed to ensure the confidentiality and privacy of data. There should be comprehensive error-handling mechanisms are essential for attaining the relevant data.

III. METHODOLOGY

A. Research Design

The research makes use of an explanatory research design for obtaining the results. The explanatory design focuses on explaining the phenomenon [13]. The explanatory research design is able to establish the links between the different aspects of the study. The explanatory design is helping in analysing the impacts of MuleSoft functionalities in empowering self-healing APIs within healthcare. The explaining of intelligent error handling enhancing fault tolerance and facilitating the creation of robust models. The explanatory design is aiding in identifying the errors of APIs that can be solved through MuleSoft. The links between the critical advantages of MuleSoft in API applications benefitting healthcare are being established. An enhanced clarity on the subject is being inferred through it.

B. Data Collection

The research is collecting qualitative and quantitative data in order to reach viable findings. The quantitative data is being collected from relevant secondary sources in the form of graphs, charts and statistics concerning the subject are being assessed. The precise findings on the capabilities of self-healing APIs within the healthcare

processes are being attained. The rigorous analysis of data is impactful in informing on the phenomenon [14]. The quantitative data assessment is revealing how the healthcare domain is being deeply benefitted. The qualitative data is being collected from industry reports, journals and books. The non-numeric data is aiding in providing enriched insights on capabilities of MuleSoft driving self-healing APIs. The elaborate knowledge is being gained on the advantages offered to healthcare systems.

C. Case Studies Examples

Case Study I: NHS

NHS is making use of API for driving effective solutions and develop a resilient system. NHS is able to design a comprehensive experience for its customers through it. There is clear, online accessibility of diverse systems strongly supporting the healthcare systems. The handling of 1.6 billion transactions accessed from 51 API customers is effective in managing vast volumes of data. The use of APIs in healthcare and the iteration of features is enabling improved processes.

Case Study II: Pfizer

Pfizer has made use of API applications to develop effective models of interactions and data integration. The use of API in Pfizer has paved the way for 69% reductions in IT project delivery costs [17]. The omnichannel engagement has yielded critical results for Pfizer with secure clinical data sharing. There has been agility achieved with the application of API led processes within the company. The APIs are helping healthcare companies to attain the needed edge across their applications.

D. Evaluation Metrics

The study is making use of evaluation metrics of accuracy and precision. The parameters are offering relevant insights into the data collected. The metrics are used for evaluating characteristics and

differences [15]. The present study is examining the exact impacts of self-healing APIs in healthcare. The precise results and outcomes offered by MuleSoft for reaching robust models are being derived. The accuracy in handling errors and the precise minimisation of downtime are being assessed to reach results. The evaluation metrics are aiding in deriving the viability of self-healing APIs for intelligent error handling. The precise impacts on the resilience of the system are being investigated reaching relevant outcomes.

IV. RESULTS

A. Data Presentation

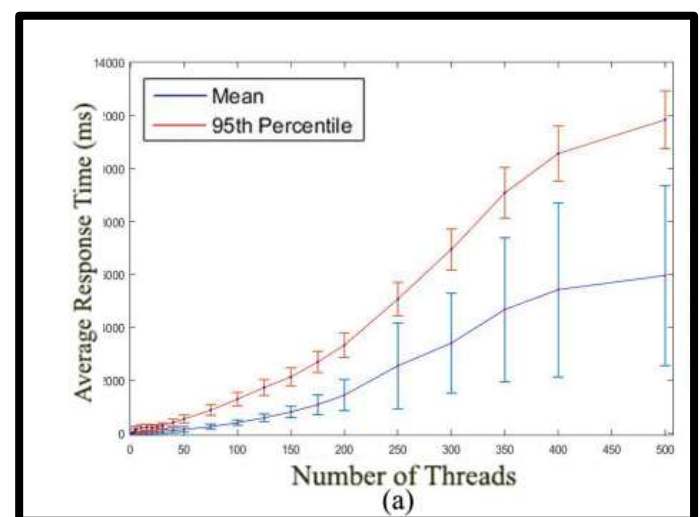


Figure 2: Increase in the Average Response Time

(Source: [18])

The above graph reveals how the average response time is increased with the use of API gateways. The gateway offloading is ensuring higher performances, especially in the context of microservice design patterns. The reduced average response time is establishing the capacities of APIs in constructing improved systems. For a single thread, the average response time is 3.82 milliseconds [18]. The reduced response time for APIs is indicating its capacities for resilient system building. There can be highly efficient outcomes extracted using API gateways in the applications.

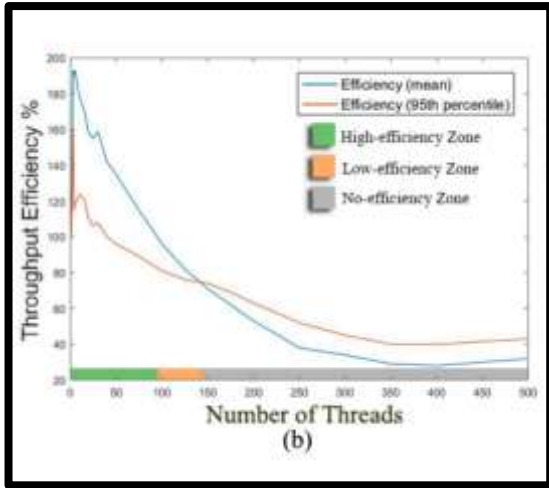


Figure 2: The increase in throughput efficiency

(Source: [18])

The above analysis reveals the increased efficiency attained with the help of API gateways. There is high efficiency noted from 1 to 83 threads. There is an overall 75% efficiency noted with the application of APIs. The APIs are able to enhance the outcomes with their application within the systems.

B. Findings

The findings hence indicate how APIs are aiding in developing efficient systems. The higher throughput and reduced Average Response Time are being attained with the integration of API [18]. The APIs being able to quickly recover can ensure tremendous benefits in healthcare. There can be highly resilient models and capacities developed with the MuleSoft intelligent error handling. The self-healing APIs can facilitate the quick recoveries needed for smooth functioning in healthcare. There can be improved results derived with the APIs being empowered through the features of MuleSoft. The MuleSoft with its intelligent error-handling components can ensure a consistent response time and higher levels of throughput.

C. Case Study Results

<i>Case Study</i>	<i>Strategy</i>	<i>Results</i>	<i>Impacts</i>
NHS	Using API across the healthcare systems for a comprehensive experience	Assimilation of strategic data and quick accessibility	There are more effective healthcare systems possible using APIs
Pfizer	Pfizer making use of APIs in its healthcare models	The secure data sharing and agility within the system achieved	Pfizer is able to develop impact-driven results with reductions in costs and agility

Table 1: Case Study Outcomes

(Source: self-created)

The case studies are being analysed in the current table. Both NHS and Pfizer are making use of APIs in their processes. There are tangible benefits gained in terms of reduced costs, accessibility and agility of the systems. Both organisations are able to receive access to enhanced models. However, the APIs can be error prone. The self-healing capacities with MuleSoft error handling can aid them in deriving improved results. There will be continuity of the services and operations across NHS and Pfizer.

D. Comparative Analysis

<i>Author</i>	<i>Aims</i>	<i>Findings</i>	<i>Gaps</i>

[3]	The anticipated barriers, values and opportunities for using API in healthcare	There is significant value associated with API usage noted in the context of clinician-facing and patient-facing care	The lack of primary data reduces the authenticity of the study
[4]	The challenges of interoperability and the benefits of API within healthcare	The transmission of healthcare data is possible with the infusion of API	The lack of discussion on the challenges and errors that an API application may face
[6]	The technique for identifying data-processing bugs in API services	The internal server error crashes faced by API affect the services	The lack of analysis regarding the errors faced by APIs during operations
[7]	The examination of how MuleSoft empowered API approach enables the organisation	The advantages of MuleSoft in terms of connectivity, consistency	The reduced discussion on the intelligent error-handling of

	ons to operate within the multi-cloud environment	cies and upgrading of data in API have been derived	MuleSoft led to self-healing APIs
[8]	The use of Pega and MuleSoft in creating APIs with minimised problems across its applications	The levelling up of business processes and operational efficiency possible using Pega and MuleSoft within API	The best practices and strategies for making use of MuleSoft in APIs have not been sufficiently explored
[11]	Discussing the comprehensive knowledge of API management that can pave the way for successful integration	The various practices that can help in utilising the API capabilities across any type of application	The systematic steps for applying API powered by MuleSoft
[10]	The need for a secure IoT-based system that can aid in fault-tolerant decision-making within healthcare	A proposed scheme for efficient and secure systems with the capacity for fault tolerance	There is a lack of analysis on the types of errors API can encounter within the system

Table 2: Comparative Analysis

(Source: self-created)

The above analysis reveals how API empowered by MuleSoft can benefit healthcare. However, there are important practises needed for developing fault-tolerant systems. The API is subject to several error crashes especially during internal server usage. However, the use of MuleSoft can increase the operational efficiency of APIs with its features ensuring consistency. The security and effectiveness of healthcare systems can be enhanced with the fault-tolerant processes.

V. DISCUSSION

A. Interpretation of Results

The results reveal how API is being impactful in developing data integration across healthcare systems. The API errors occur when the server fail to locate the particular resource. There can be numerous bugs and internal server errors taking place in API empowered systems [6]. The integration of effective error-handling processes enabling self-healing is vital for developing the robust models needed in the realm of healthcare. The MuleSoft is one such middleware platform that can create robust models. The data transformation and performance monitoring are the vital capabilities of MuleSoft that can lend significant advantages for the API applications [7]. The analysis is revealing how data mapping and robust security measures are needed for proper implementation of MuleSoft across the services. There are vital results being derived regarding the self-reliant APIs benefitting through the MuleSoft error handling. Healthcare companies can receive access to better care and operation models through API making use of MuleSoft.

B. Practical implications

The study is having significant practical implications. The analysis reveals how data mapping is playing a key role in the

successful implementation of AI [12]. The benefits of API through MuleSoft are being inferred. The knowledge will help healthcare companies to develop improved models taking into consideration the features of MuleSoft. Healthcare companies can receive access to better services and outcomes. The steps for healthcare companies to successfully integrate API has been outlined. There can be effective implementation of MuleSoft-enabled API processes possible with the knowledge derived.

C. Challenges and Limitations

The MuleSoft features can help APIs to recover from errors within healthcare. However, there are a set of challenges that the APIs may encounter in the execution. There can be internal server errors faced with API disrupting the operations of healthcare. APIs can present difficulties in terms of maintaining security measures across the applications. However, the use of MuleSoft can help in overcoming such challenges. The performance monitoring of MuleSoft can quickly identify errors and overcome them [7].

D. Recommendations

The companies will need to take effective steps to manage the security of systems. The MuleSoft-enabled APIs can pave the way for improved outcomes with performance monitoring. However, the API applications are vulnerable and can face security threats. The companies seeking to implement APIs should develop standardised security policies. There is effective data mapping needed across MuleSoft for successful implementation is one the key steps [10]. The organisations should define the data mapping needed for robust outcomes.

VI. CONCLUSION AND FUTURE WORK

The study reveals how API is benefitting the healthcare sector. However, API can

generate errors that can disrupt healthcare systems. The MuleSoft integrated with API can help in the execution of intelligent error handling. The self-healing capacities of API such as error recoveries and fault tolerances can be acquired through it. The API functionalities can be empowered and errors within the system can be overcome with the MuleSoft application. Future work should concentrate on analysing the capacities of MuleSoft. The intelligent error handling that can benefit companies should be studied for developing robust processes.

VII. REFERENCE LIST

- [1] Sivaraman, H., 2022. Self-Healing Test Automation Frameworks Using Reinforcement Learning for Full-Stack Test Automation. *Journal of Artificial Intelligence & Cloud Computing. SRC/JAICC-E210*. DOI: [doi.org/10.47363/JAICC/2022\(1\)E210](https://doi.org/10.47363/JAICC/2022(1)E210) *J Arti Inte & Cloud Comp*, 1(4), pp.2-4.
- [2] Tadi, S.R.C.C.T., 2022. Architecting Resilient Cloud-Native APIs: Autonomous Fault Recovery in Event-Driven Microservices Ecosystems. *Journal of Scientific and Engineering Research*, 9(3), pp.293-305.
- [3] Gordon, W.J. and Rudin, R.S., 2022. Why APIs? Anticipated value, barriers, and opportunities for standards-based application programming interfaces in healthcare: perspectives of US thought leaders. *JAMIA open*, 5(2), p.ooac023.
- [4] Chitta, S., Sadhu, A.K.R., Gudala, L. and Reddy, S.G., 2022. Unlocking Health Data: API-Driven Solutions for Interoperability Challenges. *Journal of Informatics Education and Research*, 2, p.45.
- [5] Avertium.com, 2022, *API vulnerabilities in healthcare*, Available at: <https://www.avertium.com/resources/threat-reports/healthcare-and-api-vulnerabilities> [Accessed on: 4th December, 2022]
- [6] Godefroid, P., Huang, B.Y. and Polishchuk, M., 2020, November. Intelligent REST API data fuzzing. In *Proceedings of the 28th ACM joint meeting on European software engineering conference and symposium on the foundations of software engineering* (pp. 725-736).
- [7] Singasani, T.R., 2020. Leveraging MuleSoft for Cloud Integration: Exploring API-Led Connectivity for Seamless Multi-Cloud Architectures. *European Journal of Advances in Engineering and Technology*, 7(8), pp.96-99.
- [8] Singasani, T.R., 2020. Leveraging PEGA and MuleSoft for Seamless API Integration: A Comprehensive Framework. *International Journal of Science and Research (IJSR)*, 9(6), pp.1955-1957.
- [9] Koppanathi, S.R., 2019. Integrating Salesforce with Legacy ERP Systems: Challenges and Solutions. *Journal of Scientific and Engineering Research*, 6(9), pp.217-221.
- [10] Gope, P., Gheraibia, Y., Kabir, S. and Sikdar, B., 2020. A secure IoT-based modern healthcare system with fault-tolerant decision making process. *IEEE Journal of Biomedical and Health Informatics*, 25(3), pp.862-873.
- [11] Yugandhar, M. B. D. (2022). Fintech Digital Products and Customer Consent-Ontrust solution. *International Journal of Information and Electronics Engineering*, 12(1), 5-15.
- [12] Chintale P: Optimizing data governance and privacy in Fintech: leveraging Microsoft Azure hybrid cloud solutions. *Int J Innov Eng Res*. 2022, 11:
- [13] "The Role of Artificial Intelligence in Enhancing Data Security and Compliance in Cloud-Based Ecommerce Logistics Integration", *int. J. Eng. Res. Sci. Tech.*, vol. 18, no. 3, pp. 176–185, Aug. 2022, doi: 10.62643/.

- [14] Mathijssen, M., Overeem, M. and Jansen, S., 2020. Identification of practices and capabilities in API management: a systematic literature review. *arXiv preprint arXiv:2006.10481*.
- [15] Swayamdipta, S., Schwartz, R., Lourie, N., Wang, Y., Hajishirzi, H., Smith, N.A. and Choi, Y., 2020. Dataset cartography: Mapping and diagnosing datasets with training dynamics. *arXiv preprint arXiv:2009.10795*.
- [16] Næss, P., 2020. Validating explanatory qualitative research: Enhancing the interpretation of interviews in urban planning and transportation research. *Applied Mobilities*.
- [17] Raskind, I.G., Shelton, R.C., Comeau, D.L., Cooper, H.L., Griffith, D.M. and Kegler, M.C., 2019. A review of qualitative data analysis practices in health education and health behavior research. *Health Education & Behavior*, 46(1), pp.32-39.
- [18] Vujović, Ž., 2021. Classification model evaluation metrics. *International Journal of Advanced Computer Science and Applications*, 12(6), pp.599-606.
- [19] DigitalHealth.net, 2022, *Making integration easier at the NHS*, Available at: <https://www.digitalhealth.net/2022/05/making-integration-easier-at-the-nhs/> [Accessed on: 3rd December, 2022]
- [20] DemandTalk.com, 2021, *How Pfizer built an application network to accelerate innovation*, Available at : <https://www.demandtalk.com/whitepaper/app-management-solutions/how-pfizer-built-an-application-network-to-accelerate-innovations/> [Accessed on : 5th November, 2022]
- [21] Akbulut, A. and Perros, H.G., 2019. Performance analysis of microservice design patterns. *IEEE Internet Computing*, 23(6), pp.19-27.
- [22] Venna, S. R. (2022). Global Regulatory Intelligence: Leveraging Data for Faster ECTD Approvals. Available at SSRN 5283298.