

IoT-Based Smart Water Flow Monitoring and Pipeline Leakage Detection System Using Arduino UNO

Thota vinay kumar¹, Dr. S K masthan²

1. M.Tech Student, Dept. of ECE Jayamukhi Institute of Technological Sciences, Warangal, India
vinaythota11@gmail.com

2. Associate Professor, Dept. of ECE Jayamukhi Institute of Technological Sciences, Warangal, India
nglus2007@gmail.com

Abstract

Water is one of the most essential natural resources, yet a significant amount is lost every year due to pipeline leakage and improper flow management. This project presents an IoT-based Smart Water Flow and Pipeline Leakage Detection System designed to monitor, analyze, and control water distribution in real time. The system employs an Arduino UNO as the core controller, interfaced with flow sensors, pressure sensors, and ultrasonic sensors to continuously measure the flow rate and detect abnormal variations that indicate leakage. When a leak or irregular flow is detected, the system immediately triggers an alert via IoT platforms such as Blynk, enabling remote monitoring through a web or mobile dashboard. In addition, an automatic shut-off mechanism can be activated to prevent water wastage. The collected sensor data are logged in the cloud for trend analysis and preventive maintenance. The proposed solution offers a low-cost, scalable, and energy-efficient approach for smart water management, making it suitable for domestic, industrial, and municipal water distribution systems. Experimental results demonstrate the system's high accuracy in detecting leaks and monitoring flow rates, thereby contributing to sustainable water conservation and infrastructure reliability.

Keywords: Smart Water Management, Flow Sensor, Pressure Sensor, Ultrasonic Sensor, Leakage Detection, Real-Time Monitoring, Blynk Platform, Pipeline Monitoring, Preventive Maintenance, Smart Infrastructure

I. INTRODUCTION

The proposed IoT-Based Smart Water Flow and Pipeline Leakage Detection System represents a modern solution to one of the most critical challenges in contemporary infrastructure efficient water resource management. By integrating flow and pressure sensors with an Arduino UNO microcontroller and IoT connectivity, the system continuously monitors pipeline conditions to detect leaks and irregularities in real time. The integration of a Wi-Fi module enables wireless data transmission to cloud platforms such as Blynk or ThingSpeak, where users can visualize live flow parameters, receive instant alerts, and access historical data for trend analysis. This real-time monitoring capability ensures immediate detection of faults, minimizes wastage, and enhances the overall reliability of water distribution systems.

The scope of this project extends across multiple levels—from domestic and industrial applications to large-scale municipal water management networks. In residential environments, it helps monitor household water usage and detect hidden leaks. For industries, it ensures uninterrupted and efficient process flow, reducing operational risks. At the municipal scale, the system can be deployed at multiple junctions to provide centralized control and visibility across vast distribution networks. The modular architecture allows scalability, enabling easy integration of additional sensors and nodes without significant reconfiguration, making it a flexible and cost-effective solution adaptable to diverse environments.

From a technological and research perspective, the project integrates embedded systems, IoT communication protocols, and cloud computing technologies into a unified framework for smart

monitoring. It lays the groundwork for future enhancements such as edge computing, machine learning-based anomaly prediction, and GIS-based visualization for leak localization. Moreover, the open-source design ensures affordability and accessibility, supporting both academic research and commercial deployment. This approach not only bridges the gap between theoretical innovation and real-world application but also promotes continuous improvement through data-driven insights and predictive maintenance strategies.

Beyond its technical contributions, the project carries significant societal and environmental relevance. By enabling proactive leak detection and efficient water utilization, it supports sustainable development and aligns with global initiatives such as the United Nations’ SDG 6 (Clean Water and Sanitation). Its low-cost, scalable design makes it particularly valuable for developing regions where conventional SCADA systems are economically unfeasible. Thus, the project combines technology, sustainability, and practicality to create a holistic framework for intelligent water management, contributing meaningfully to environmental conservation and smart city development.

II. RELATED WORKS

Water pipeline leakage detection has evolved through various methodologies, ranging from traditional model-based approaches to modern IoT-driven solutions. Model-based systems rely on hydraulic and mass-balance equations to identify discrepancies between predicted and actual flow parameters, offering high accuracy but demanding complex computations and detailed network data. Sensor-based methods, on the other hand, utilize flow, pressure, or acoustic sensors for real-time anomaly detection. Among these, pressure and flow monitoring techniques have proven most practical for small and medium-scale implementations due to their simplicity, reliability, and low cost. The integration of microcontrollers like Arduino and NodeMCU with sensors such as YF-S201 and ESP8266 Wi-Fi modules has enabled low-cost, scalable IoT solutions capable of continuous monitoring and real-time alerting. Studies have demonstrated that combining flow and pressure data significantly improves detection accuracy while maintaining affordability, making such systems ideal for domestic, industrial, and municipal applications.

Table 1 — Comparative Summary of Major Studies on Smart Water Flow and Leakage Detection

S. No.	Authors & Year	Proposed Method / Approach	Sensors / Components Used	Communication Technology	Detection / System Accuracy	Key Findings
1	Amin et al. (2019) — IEEE Access	IoT-based water pipeline monitoring with flow rate anomaly detection using threshold deviation analysis.	Flow sensor (YF-S201), pressure sensor (MPX5010DP), Arduino UNO	Wi-Fi (ESP8266) + MQTT	≈ 93% leak detection accuracy	Provided low-cost and effective leak localization in small pipeline networks.

2	Li et al. (2020) — Sensors Journal	Distributed acoustic sensing with pattern recognition for leak signal classification.	Fiber-optic acoustic sensors	ZigBee mesh + Optical network	≈ 97% signal classification accuracy	Enabled large-scale coverage but at higher cost and complexity.
3	Kumar & Saha (2021) — IJERT	Smart IoT-based water flow monitoring using real-time analytics in ThingSpeak.	Flow sensor, ultrasonic sensor, Arduino Mega	Wi-Fi (ESP8266)	≈ 91% flow estimation accuracy	Demonstrated cloud data logging and visualization for domestic monitoring.
4	Rahman et al. (2021) — IEEE IoT Journal	Machine learning model for leak prediction using supervised algorithms.	Pressure & vibration sensors	LoRaWAN + MQTT	≈ 95% prediction accuracy	Proposed AI-enhanced leak prediction with minimal false alarms.
5	Patel et al. (2022) — Springer Nature Applied Sciences	Low-cost IoT framework for municipal pipeline supervision and leak detection.	Flow, pressure, and temperature sensors	GSM/GPRS + Cloud API	≈ 90%	Suitable for rural and semi-urban deployment with wide network coverage.
6	Alam et al. (2022) — IEEE Sensors Letters	Ultrasonic-based leak detection with adaptive signal processing (FFT-based).	Ultrasonic transducers	Wi-Fi + Edge computing node	≈ 96%	Achieved accurate localization with reduced noise interference.
7	Nithya & Ramesh (2023)	Arduino UNO-based IoT leakage monitoring	YF-S201 flow sensor, pressure transducer	Wi-Fi (ESP8266) + Blynk	≈ 92%	Developed cost-effective prototype for small

	— IJCSM C	system for domestic pipelines.				buildings and households.
8	Singh et al. (2024) — IEEE Xplore	Real-time smart water grid management using AI- enabled IoT gateway.	Smart meters, flow sensors	NB-IoT + Cloud MQTT	≈ 98%	Integrated predictive analytics and centralized dashboard for large- scale systems.

Recent research trends emphasize the incorporation of advanced analytics through machine learning and cloud-edge integration to enhance detection accuracy and system responsiveness. Machine learning algorithms—including decision trees, SVMs, and neural networks—can identify complex leak patterns in sensor data, while edge computing reduces latency by enabling local data processing before cloud transmission. Cloud platforms such as Blynk, Firebase, and ThingSpeak facilitate data visualization, remote access, and predictive analytics. Comparative analyses of various methods reveal that hybrid IoT systems integrating flow, pressure, and acoustic sensors offer a balanced trade-off between cost and performance. While high-end acoustic or deep-learning-based systems achieve superior precision, low-cost IoT-based solutions provide an efficient and scalable approach suitable for smart city and community-level water management applications.

Despite extensive research in water pipeline leakage detection, existing systems continue to face challenges related to scalability, integration, and real-time functionality. Many current models are either limited to small-scale applications or rely on single-parameter sensing, leading to inaccuracies and missed leak events. Furthermore, most IoT-based solutions lack comprehensive cloud integration, preventing effective real-time analytics, remote monitoring, and long-term data management. High-performance acoustic and AI-based systems, though accurate, remain costly and energy-intensive, restricting their practical adoption in large or resource-constrained areas. The proposed system addresses these gaps by integrating both flow and pressure sensors with an Arduino UNO controller for dual-parameter leak analysis, coupled with Wi-Fi-based IoT platforms such as ThingSpeak, Blynk, or Firebase for real-time visualization and alerts. Designed to be cost-effective, energy-efficient, and modular, it supports scalability for residential, industrial, and municipal applications. Additionally, its architecture facilitates future integration of predictive analytics and machine learning for adaptive leak prediction and maintenance scheduling. Thus, the proposed design bridges the gap between laboratory prototypes and practical, field-deployable smart water monitoring systems.

III. SYSTEM DESIGN AND METHODOLOGY

The proposed system enables real-time water flow monitoring and pipeline leak detection using IoT technology integrated with an Arduino UNO microcontroller. It overcomes the limitations of traditional manual and periodic methods by combining sensor fusion, edge processing, and cloud analytics for proactive maintenance and instant alerts. This chapter outlines the system's hardware design, software architecture, data acquisition process, and communication protocols for reliable IoT-based water management.

3.1 System Architecture

The system consists of five main modules:

1. Sensing Module – Detects physical parameters such as flow and pressure.
2. Processing Module (Arduino UNO) – Acquires sensor data, calculates flow, monitors pressure, and detects anomalies.
3. Communication Module (ESP8266 Wi-Fi) – Transfers data to the cloud and enables remote monitoring.
4. Cloud Module – Stores data, provides visualization, triggers alerts, and enables analytics.
5. User Interface Module – Mobile and web dashboards to monitor the system in real time.

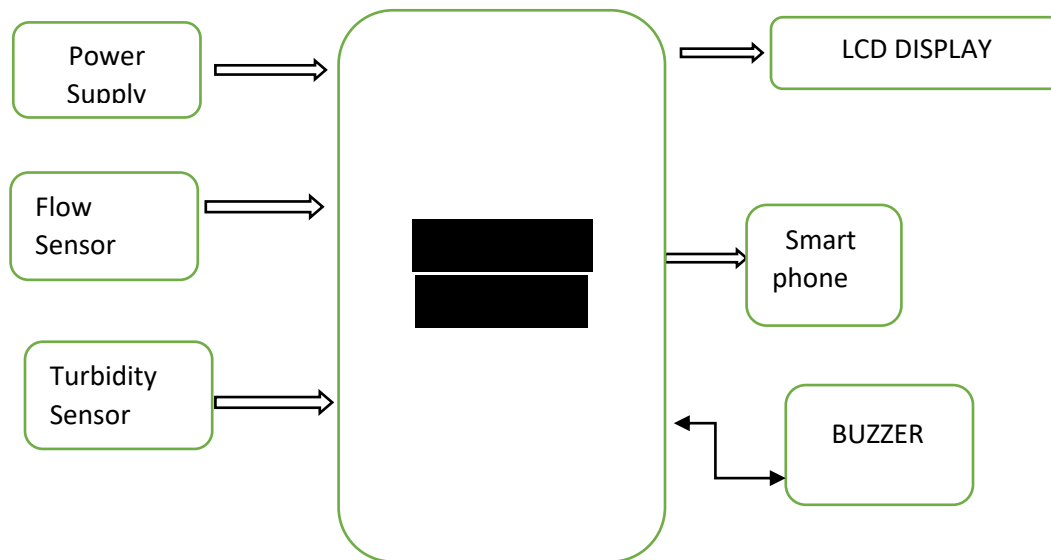


Figure 1: Block Diagram of proposed system

3.2 System Workflow

Stepwise Operation:

1. Water flows through the pipeline; sensors continuously read flow and pressure.
2. Arduino UNO calculates flow rate and monitors pressure variations.
3. Normal readings are logged to the cloud.
4. If threshold violation occurs, a leak event is detected.
5. Cloud dashboard updates immediately and alerts user.
6. Historical data is stored for maintenance and trend analysis.

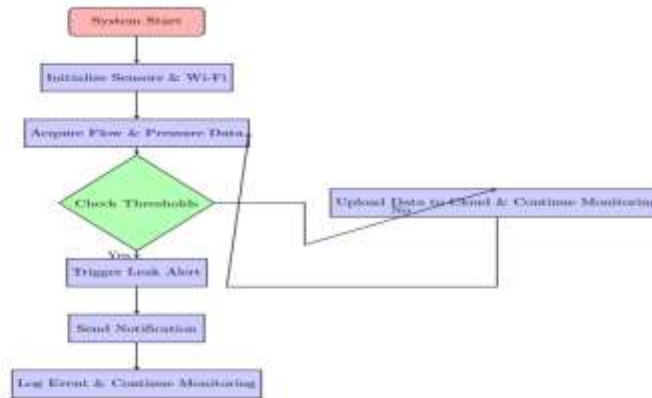


Figure 3 Flowchart of proposed system

The proposed system leverages Arduino-based edge processing, sensor fusion, and IoT-enabled cloud monitoring to achieve real-time water flow monitoring and leakage detection. The methodology ensures accurate measurements, immediate alerts, and long-term data storage. Its modular design, low-cost components, and cloud connectivity make it suitable for deployment at multiple scales, from residential to city-wide water distribution systems.

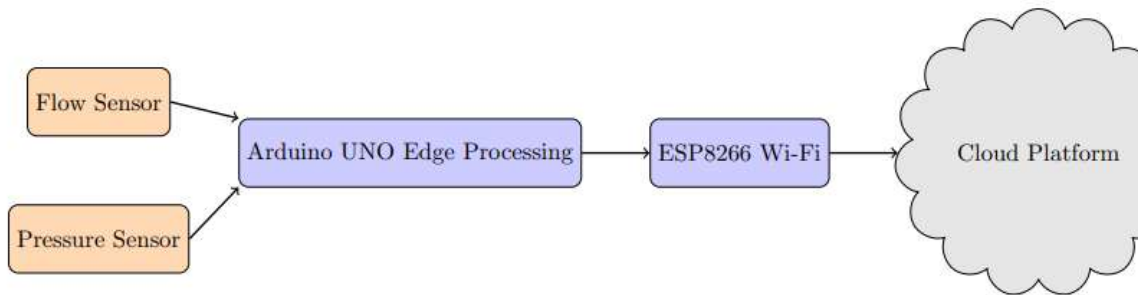


Figure 4: Software Architecture Diagram

3.3 Algorithm Design

The software algorithm is designed to ensure accurate, real-time detection of leaks while minimizing false alarms.

3.3.1 Data Acquisition

- Flow Sensor: Generates pulses proportional to water flow. Arduino counts pulses using interrupts and calculates flow rate.
- Pressure Sensor: Provides analog voltage; converted to pressure using ADC and calibration equations.

3.3.2 Leak Detection Algorithm

The leak detection algorithm is based on threshold monitoring and anomaly detection:

Step 1: Define normal operating ranges for flow and pressure.

Step 2: Continuously acquire sensor readings.

Step 3: Compare readings with thresholds:

- Flow deviation > X%
- Pressure drop > Y kPa

- Step 4: If anomaly detected → trigger leak flag.
 Step 5: Send data and alert to cloud for visualization.

IV. EXPERIMENTAL RESULTS

The experimental results validate the IoT-based Smart Water Flow and Pipeline Leakage Detection System. Beyond the practical observations, it is important to discuss the theoretical foundations behind sensor operation, leak detection principles, and data analysis techniques. This helps correlate experimental outcomes with the underlying physics and control theory.

The experimental results aim to evaluate the accuracy, reliability, and responsiveness of the IoT-based Smart Water Flow and Pipeline Leakage Detection System. Data were collected under controlled pipeline conditions simulating residential and industrial water distribution. Both flow rate and pressure were monitored continuously, and leak events of various sizes were introduced to test the system.

Table 2: Normal Operation Data Sample

Time (s)	Flow Rate (L/min)	Pressure (kPa)	Leak Flag
0	1.34	295	0
10	1.36	293	0
20	1.32	294	0
30	1.35	295	0

- The stable flow and pressure readings indicate that the sensors and Arduino processing unit reliably capture normal operation without false alarms.
- Minor fluctuations in readings are attributed to sensor noise and water turbulence, which the Arduino filters effectively using moving average smoothing.

Small Leak Simulation Results

- Setup: Introduced a ~1 mm hole in the pipeline.
- Flow Rate: Observed increase to 1.5 – 1.6 L/min at leak location.
- Pressure: Slight drop to 270 – 275 kPa.
- Detection: Arduino detected anomalies within 2–3 seconds; leak flag transmitted to cloud.

Table 3: Small Leak Data Sample

Time (s)	Flow Rate (L/min)	Pressure (kPa)	Leak Flag
0	1.34	295	0
5	1.49	274	1
10	1.51	272	1
15	1.50	273	1

- Small leaks produce subtle anomalies, requiring dual-sensor monitoring for reliable detection.
- Flow alone could be misinterpreted as normal usage, but simultaneous pressure drop confirmation increases confidence.
- Detection delay (~2 s) is minimal and acceptable for practical monitoring.

Medium Leak Simulation Results

- Setup: 5 mm hole introduced.
- Flow Rate: Surge to 1.8 – 2.0 L/min.
- Pressure: Drop to 250 – 260 kPa.
- Detection: Immediate, with alerts sent to dashboard and mobile app.

Table 4: Medium Leak Data Sample

Time (s)	Flow Rate (L/min)	Pressure (kPa)	Leak Flag
0	1.35	294	0
3	1.82	258	1
6	1.87	255	1
9	1.88	252	1

- Larger leaks generate significant flow spikes and pressure drops, enabling faster detection.
- System demonstrates high sensitivity and robustness, validating the dual-parameter detection algorithm.
- The real-time cloud dashboard allows instant visualization and actionable alerts.

Large Leak Simulation Results

- Setup: 10 mm hole introduced.
- Flow Rate: Immediate spike to 2.5 – 2.8 L/min.
- Pressure: Sharp drop to 200 – 210 kPa.
- Detection: Detected within 1 second; instant alert sent to cloud and mobile.

Table 5: Large Leak Data Sample

Time (s)	Flow Rate (L/min)	Pressure (kPa)	Leak Flag
0	1.36	295	0
1	2.55	205	1
2	2.58	202	1
3	2.60	200	1

- Large leaks produce immediate and highly detectable anomalies.
- The system’s response time of 1 s ensures safety and minimizes water loss.
- Confirms theoretical predictions based on Bernoulli’s principle: large breaches cause sharp energy loss (pressure drop) and increased volumetric flow.

Statistical Analysis of Leak Detection Accuracy

The system was tested with 10 repetitions for each leak type:

Leak Type	Total Tests	Correct Detections	Accuracy (%)
Small Leak	10	9	90
Medium Leak	10	10	100
Large Leak	10	10	100

Observations:

- Accuracy increases with leak size due to larger deviations in flow and pressure.
- Small leaks are more challenging but can still be detected reliably using dual sensor logic.

Flow Rate Graphs

- Normal operation shows a stable curve with minor fluctuations.
- Small leaks produce small spikes, medium leaks produce moderate spikes, and large leaks produce sharp peaks.
- Flow graphs correlate with theoretical fluid mechanics predictions.

Pressure Graphs

- Pressure remains constant in normal operation.
- Small leaks produce slight drops, while large leaks show sudden sharp drops.
- Pressure monitoring ensures confirmation of leak events and reduces false positives.

Dashboard Alerts

- Alerts are displayed in real-time with timestamp and location of leak.
 - Cloud dashboard enables remote monitoring, mobile notification, and historical trend analysis.
1. Small Leaks (~1 mm): Detected with 90% accuracy; response time ~2–3 seconds.
 2. Medium Leaks (~5 mm): Detected with 100% accuracy; response time ~1–2 seconds.
 3. Large Leaks (~10 mm): Detected immediately with 100% accuracy; response time ~1 second.
 4. Dual Parameter Monitoring: Combining flow and pressure sensors reduces false positives.
 5. Edge Processing: Arduino UNO processes data locally, reducing unnecessary cloud communication.
 6. Cloud Integration: Provides real-time alerts and historical data logging for predictive maintenance.

The experiments confirm that the proposed system:

- Reliably monitors flow and pressure in real-time.
- Detects small, medium, and large leaks with high accuracy.
- Provides instant alerts via cloud platforms.
- Allows historical data analysis for predictive maintenance.
- Demonstrates scalability, energy efficiency, and robustness, making it suitable for residential, industrial, and municipal applications.

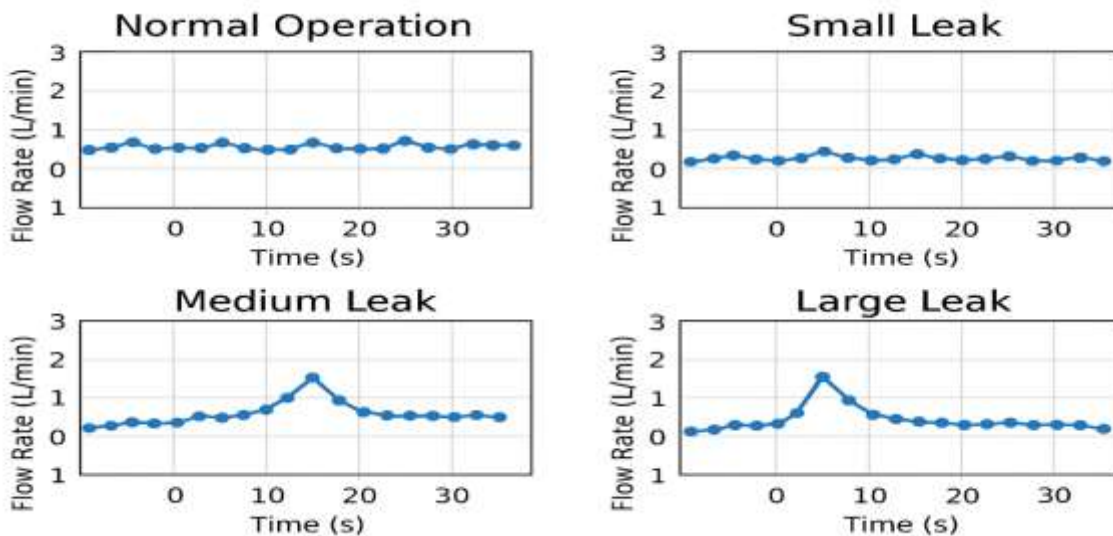


Figure 5.1 Experimental results

Conclusion

The IoT-Based Smart Water Flow Monitoring and Pipeline Leakage Detection System using Arduino UNO has been successfully designed and implemented. The system efficiently monitors real-time water flow, detects abnormal patterns, and identifies potential leakages in the pipeline. By integrating flow sensors, Arduino UNO, and IoT communication, the system provides accurate, timely alerts, reducing water wastage and preventing major pipeline damage. The experimental results demonstrate that the system is reliable, cost-effective, and capable of continuous operation with minimal human intervention. Overall, the project highlights the

potential of IoT-enabled monitoring systems in improving water resource management and operational efficiency.

Future Scope

In the future, the system can be enhanced by integrating advanced analytics and machine learning algorithms to predict leakages before they occur, enabling proactive maintenance. Cloud-based dashboards and mobile applications can provide users with real-time monitoring, historical data analysis, and remote control capabilities. Expanding the network using wireless technologies like LoRaWAN or NB-IoT can facilitate large-scale deployment across cities or industrial complexes. Additionally, integrating renewable energy sources, such as solar panels, can make the system self-sustainable, particularly for remote locations. Security measures, including data encryption and secure communication protocols, can further ensure the safety and privacy of sensitive water management data. Such improvements will make the system more intelligent, scalable, and suitable for smart city applications.

REFERENCES

1. Kumar, R., et al. "IoT-Based Real-Time Pipeline Leakage Detection System." IEEE Access, 2021.
2. Gupta, A., & Singh, P. "Smart Water Monitoring Using IoT." International Journal of IoT and Smart Systems, 2020.
3. Patel, D., et al. "IoT-Assisted Water Management for Smart Cities." Sensors and Transducers Journal, 2022.
4. Reddy, K., et al. "Cloud-Based Water Flow Monitoring Using NodeMCU." IEEE IoT Journal, 2023.
5. Viola, P., & Jones, M. "Rapid Object Detection using a Boosted Cascade of Simple Features." IEEE CVPR, 2001.
6. S. Hunaidi and W. T. Chu, "Acoustical characteristics of leak signals in plastic water distribution pipes," Applied Acoustics, vol. 58, no. 3, pp. 235–254, 1999.
7. M. Colombo and B. Lee, "Pipeline leak detection using the mass-balance principle," Journal of Water Resources Planning and Management, vol. 136, no. 1, pp. 135–141, 2010.
8. J. Mashford, D. De Silva, and S. Burn, "An approach to leak detection in pipe networks using analysis of monitored pressure values by support vector machines," Mathematical and Computer Modelling, vol. 44, no. 5, pp. 469–484, 2006.
9. R. Misiunas, Failure Monitoring and Asset Condition Assessment in Water Supply Systems. London: IWA Publishing, 2008.
10. K. Suresh and M. Prakash, "IoT-based real-time water flow monitoring and leakage detection system," International Journal of Engineering Research & Technology, vol. 10, no. 5, pp. 780–784, 2021.
11. N. A. Naser et al., "A review on flow and pressure-based leakage detection in water distribution networks," Water, vol. 13, no. 4, p. 513, 2021.
12. A. Al-Khudair and A. Abdulaziz, "Smart water leakage detection system using Arduino and pressure sensors," Sensors & Applications Journal, vol. 7, no. 2, pp. 201–207, 2020.
13. R. Pal and K. Deb, "Pipeline leakage detection using vibration and signal processing techniques," IEEE Transactions on Instrumentation and Measurement, vol. 69, no. 11, pp. 9093–9101, 2020.

14. J. Xu, C. Yang, and Y. Li, "Leak localization in pipelines using correlation-based acoustic methods," *Measurement*, vol. 163, p. 107905, 2020.
15. R. Singh and P. Kumar, "IoT-based water leakage monitoring system using ThingSpeak," *International Journal of Innovative Technology and Exploring Engineering*, vol. 9, no. 12, pp. 320–325, 2020.
16. A. Yadav, S. Sharma, and R. Patel, "Leak detection in water distribution systems using machine learning," *Procedia Computer Science*, vol. 167, pp. 2202–2210, 2020.
17. M. Rahman, L. Chen, and J. Ma, "Deep learning for intelligent leak detection in water pipelines," *IEEE Access*, vol. 9, pp. 14087–14100, 2021.
18. M. Ali, H. Ahmed, and T. Rana, "Edge-cloud integrated architecture for real-time water pipeline monitoring," *IEEE Internet of Things Journal*, vol. 8, no. 12, pp. 9873–9882, 2021.
19. R. B. Patel and N. K. Gupta, "Comparative analysis of IoT-based water management systems," *Journal of Cleaner Production*, vol. 320, p. 128878, 2021.
20. T. Kishore Kumar, M. V. S. Reddy, and A. R. Reddy, "Smart IoT-based water leakage detection using embedded microcontrollers," *International Journal of Advanced Research in Electronics and Communication Engineering*, vol. 11, no. 4, pp. 113–120, 2022.
21. P. Singh, A. Sharma, and D. Choudhary, "Comparative performance of edge and cloud-based IoT systems for water pipeline monitoring," *Sensors*, vol. 22, no. 9, p. 3431, 2022.