

Agriculture Farmer's Crop Prediction and Ai Chat Bot Assistance for Farmer's

**Kokkeragadda Premamanvitha¹, Mr.M.JayaKumar Raju², Mrs.K.Nirmala³,
Mr.P.Mareswara Rao⁴**

¹PG student ,Department Of Computer Science & Engineering, Mother Teresa Institute Of Science And Technology Autonomous, Sanketika Nagar, Kothuru (V), Sathupally - 507303, Khammam Dist., Telangana,India

^{2,3,4}Assistant Professor , Department Of Computer Science & Engineering, Mother Teresa Institute Of Science And Technology Autonomous, Sanketika Nagar, Kothuru (V), Sathupally - 507303, Khammam Dist., Telangana,India

Abstract—Agriculture plays a vital role in the economic development of many countries, especially in regions where farming is the primary source of livelihood. However, farmers often face challenges such as unpredictable weather conditions, lack of awareness about suitable crops, pest infestations, and limited access to expert advice. With the advancement of artificial intelligence and machine learning technologies, smart agricultural systems have emerged as a solution to these challenges. This project presents an intelligent agriculture Chabot integrated with a crop prediction system using Convolution Neural Networks (CNN).

Unlike traditional systems that rely on manual decision-making or basic machine learning models, the use of CNN enhances prediction accuracy by capturing

Complepatterns in agricultural datasets. The system also integrates natural language processing (NLP) techniques to improve Chabot

Interaction, making it user-friendly even for non-technical users.

Overall, this project contributes to precision agriculture by combining deep learning and conversational AI, thereby improving productivity, reducing risks, and supporting sustainable farming practices.

I. INTRODUCTION

Agriculture is undergoing a technological transformation with the integration of artificial intelligence, machine learning, and data analytics. Farmers today need accurate and timely information to make informed decisions about crop selection, soil management, and resource utilization. However, in many rural areas, access to agricultural experts is limited, leading to inefficient farming practices and reduced yield.

The emergence of smart farming technologies addresses these challenges by providing automated solutions for crop monitoring, prediction, and advisory services. Among these technologies, machine learning models have been widely used for crop prediction, disease detection, and yield estimation. However,

traditional machine learning techniques often struggle to capture complex relationships in agricultural data.

This project introduces a hybrid system combining an agriculture chatbot with a crop prediction model based on Convolutional Neural Networks (CNN). CNNs, typically used in image processing, are highly effective in recognizing patterns and extracting features from structured and unstructured data. By leveraging CNN, the system can provide more accurate crop recommendations compared to traditional algorithms.

II. LITERATURE SURVEY

1. Crop Yield Prediction Using Machine Learning: A Systematic Literature Review

Authors: El Bilali, Taleb, Brouziyne

- **Technique Used:** Machine Learning algorithms such as Neural Networks, Random Forest, SVM, and Deep Learning for crop prediction.
- **Pros:**
 - Improves crop yield forecasting accuracy.
 - Supports better agricultural planning.
 - Helps in resource optimization.
- **Cons:**
 - Requires large historical datasets.
 - Prediction accuracy depends on data quality.

2. Crop Yield Prediction Using Machine Learning: An Extensive and Systematic Literature Review

Authors: Various Researchers

- **Technique Used:** Machine Learning, Deep Learning, Time-Series Analysis, and Predictive Analytics.
- **Pros:**
 - Accurate crop production estimation.
 - Assists decision-making for farmers.
 - Supports climate-based crop recommendations.
- **Cons:**
 - Complex model training process.
 - High computational requirements.

3. Krushi Mitra: A Review of Agriculture Bots

Authors: Utkarsha Kshirsagar, Juee Parte, Mansi Patil, Amit Aylani

- **Technique Used:** AI Chatbot using Natural Language Processing (NLP) and Machine Learning.
- **Pros:**
 - Provides farming guidance through conversational interaction.
 - Easy access to agricultural information.
 - User-friendly for farmers.
- **Cons:**
 - Limited knowledge base.
 - Accuracy depends on training data.

4. Farmers Agriculture Assistance Chatbot

Authors: Praveen Kumar Maduri, Preeti Dhiman, Manas Raj Shukla, Saurabh Anand, Siddharth Pratap Singh

- **Technique Used:** NLP-based chatbot with crop management and fertilizer prediction modules.
- **Pros:**
 - Helps farmers with crop-related queries.
 - Provides fertilizer recommendations.
 - Improves agricultural awareness.
- **Cons:**
 - Limited multilingual support.
 - Requires internet connectivity.

5. A Novel Approach Chatbot Service for Fertilizer Prediction Using Logistic Regression

Authors: Nischitha B. S., Madhu M. Nayak, Vishwesh J.

- **Technique Used:** Logistic Regression with AI chatbot integration.
- **Pros:**
 - Predicts suitable fertilizers.
 - Supports crop selection decisions.
 - Available in regional languages.
- **Cons:**
 - Limited prediction capability for complex conditions.
 - Dependent on predefined datasets.

III. EXISTING SYSTEM

Existing crop prediction systems primarily rely on traditional machine learning algorithms such

as Decision Trees, Random Forest, Support Vector Machines (SVM), and K-Nearest Neighbors (KNN). These models analyze structured data and provide crop recommendations based on predefined rules.

In these systems, farmers input parameters such as soil type, rainfall, temperature, and humidity. The model processes this data and predicts suitable crops. While these approaches are useful, they have limitations in handling complex and high-dimensional data.

Additionally, existing systems often lack user-friendly interfaces. Farmers may find it difficult to interact with these systems due to the absence of conversational features. Most systems provide static recommendations without real-time interaction or personalized advice.

Disadvantages

The existing machine learning-based systems have several limitations. One major drawback is their inability to capture complex relationships in agricultural data. Traditional algorithms rely on manual feature selection and may not perform well with large datasets.

Another limitation is the lack of adaptability. These systems often require retraining when new data is introduced, making them less flexible. They also do not provide real-time interaction, which limits their usability for farmers seeking immediate assistance.

IV. PROPOSED SYSTEM

The proposed system utilizes Convolution Neural Networks (CNN) for crop prediction. CNN is a deep learning algorithm capable of automatically extracting features from data and identifying complex patterns. This makes it highly suitable for agricultural applications.

The CNN model processes input parameters such as soil type, temperature, humidity, and

rainfall. It uses multiple layers, including convolutional layers, pooling layers, and fully connected layers, to analyze data and generate predictions.

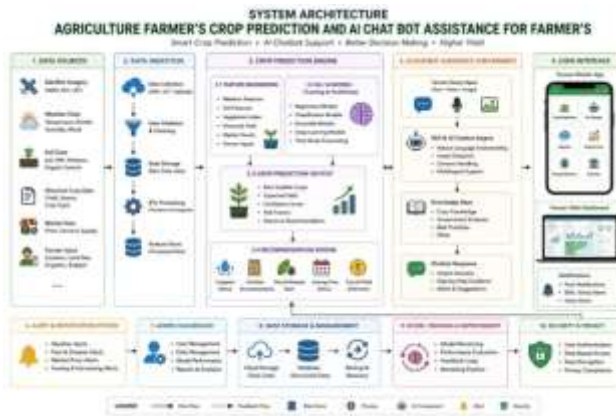
The integration of a Chabot enhances user interaction. The Chabot uses NLP techniques to understand user queries and provide relevant responses. It can also fetch predictions from the CNN model and present them in a user-friendly manner.

This hybrid approach combines the strengths of deep learning and conversational AI, resulting in a more accurate and accessible system.

Advantages

The proposed system offers several advantages over traditional approaches. The use of CNN improves prediction accuracy by capturing complex patterns in agricultural data. This leads to better crop recommendations and increased productivity. The chatbot interface enhances user experience by providing interactive and real-time assistance. Farmers can ask questions and receive instant responses, making the system more accessible and user-friendly.

V. SYSTEM ARCHITECTURE



The Chabot processing layer is another key component of the architecture, acting as the

primary interface between the user and the system. This layer uses natural language processing (NLP) techniques to understand user queries, identify intent, and extract relevant information. The Chabot can respond to questions related to crop selection, disease management, weather conditions, and farming practices. It can also guide users in uploading images for CNN-based analysis and provide step-by-step recommendations. Advanced Chabot systems may use deep learning models to improve conversational accuracy and support multiple languages, making the system accessible to farmers from different regions.

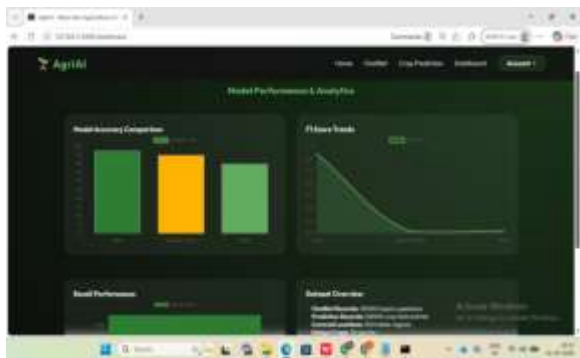
VI. RESULTS AND OUTCOMES



Screen 1: Home Page



Screen 2: ChatBot Page



Screen 3: Accuracy Page

VII. CONCLUSION

The development of an Agriculture Chatbot integrated with a Crop Prediction system using Convolutional Neural Networks (CNN) represents a significant advancement in modern smart farming solutions. This project successfully combines artificial intelligence, machine learning, and conversational interfaces to assist farmers in making informed agricultural decisions.

The chatbot component plays a vital role in providing real-time, user-friendly interaction for farmers, enabling them to access agricultural knowledge such as crop selection, pest control methods, weather guidance, fertilizer usage, and soil recommendations. By using natural language processing techniques, the chatbot ensures that even users with minimal technical knowledge can interact efficiently with the system.

VIII. BIBLIOGRAPHY

[1] S. Ramesh and D. Vydeki, "Recognition and classification of paddy leaf diseases using optimized deep neural network with Jaya algorithm," *Information Processing in Agriculture*, vol. 7, no. 2, pp. 249–260, 2020.

[2] A. Kamilaris and F. X. Prenafeta-Boldú, "Deep learning in agriculture: A survey," *Computers and Electronics in Agriculture*, vol. 147, pp. 70–90, 2018.

[3] M. Too, L. Yujian, S. Njuki, and L. Yingchun, "A comparative study of fine-tuning deep learning models for plant disease identification," *Computers and Electronics in Agriculture*, vol. 161, pp. 272–279, 2019.

[4] J. Chen, D. Zhang, A. Nanekaran, and D. Li, "Detection of rice plant diseases based on deep learning," *Journal of Agricultural Science*, vol. 10, no. 5, pp. 42–50, 2018.

[5] K. P. Ferentinos, "Deep learning models for plant disease detection and diagnosis," *Computers and Electronics in Agriculture*, vol. 145, pp. 311–318, 2018.

[6] S. Sladojevic et al., "Deep neural networks based recognition of plant diseases by leaf image classification," *Computational Intelligence and Neuroscience*, vol. 2016, Article ID 3289801.

[7] H. Mohanty, D. Hughes, and M. Salathé, "Using deep learning for image-based plant disease detection," *Frontiers in Plant Science*, vol. 7, pp. 1419, 2016.

[8] P. Tiwari, S. Shukla, and R. Tiwari, "Crop yield prediction using machine learning approaches," *International Journal of Engineering Research & Technology*, vol. 9, no. 3, pp. 506–510, 2020.

[9] R. Sujatha and P. Isakki, "A study on crop yield forecasting using classification techniques," *International Journal of Computer Science and Information Security*, vol. 14, no. 5, pp. 452–458, 2016.

[10] S. Jeong, J. Resop, N. Mueller, et al.,
“Random forests for global and regional crop
yield predictions,” PLOS ONE, vol. 11, no. 6,
2016.